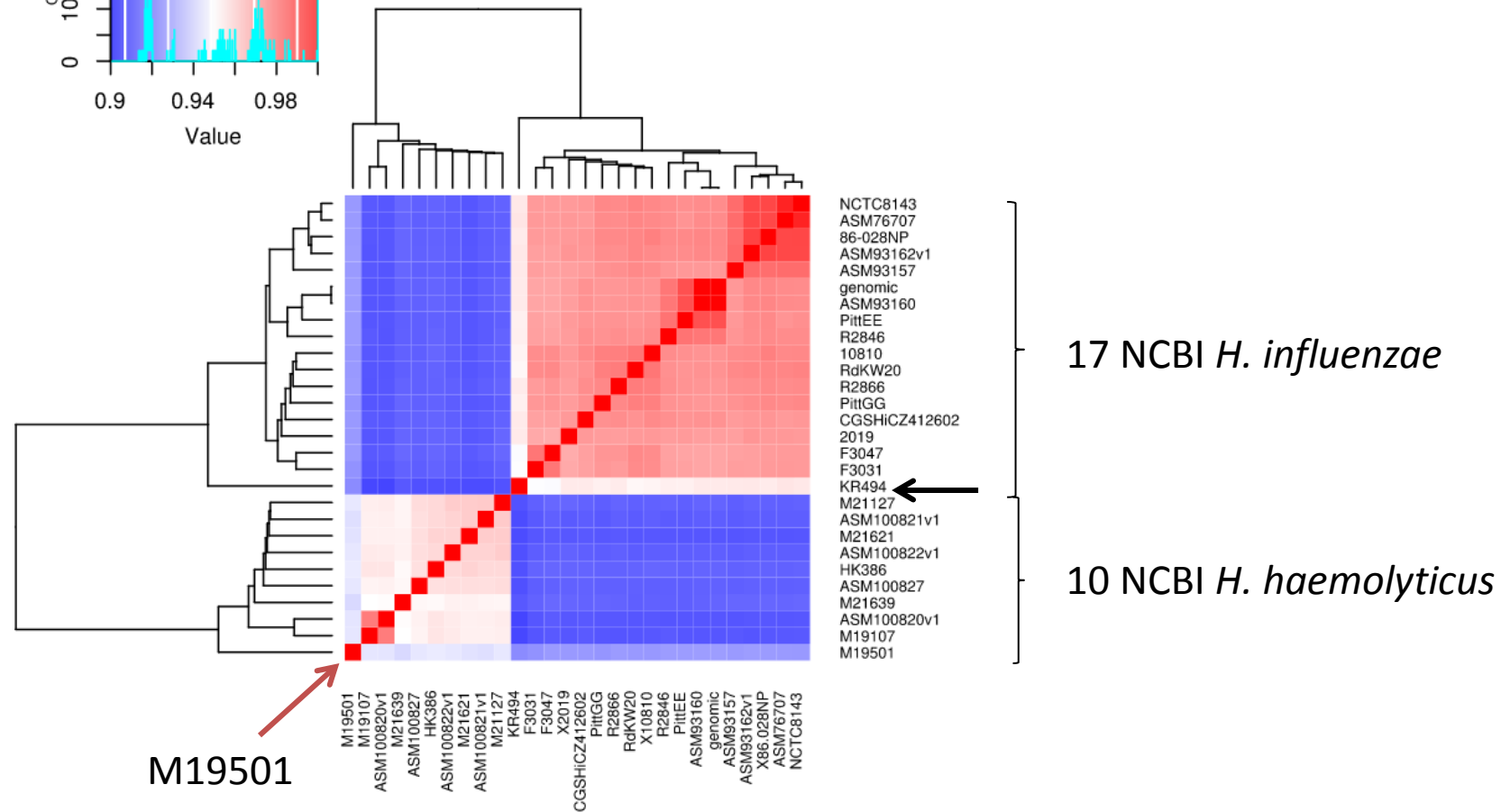
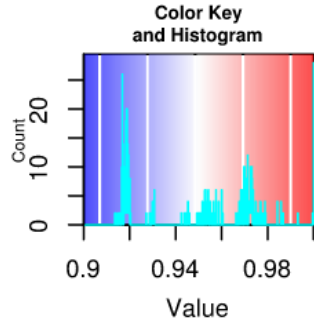


M19501

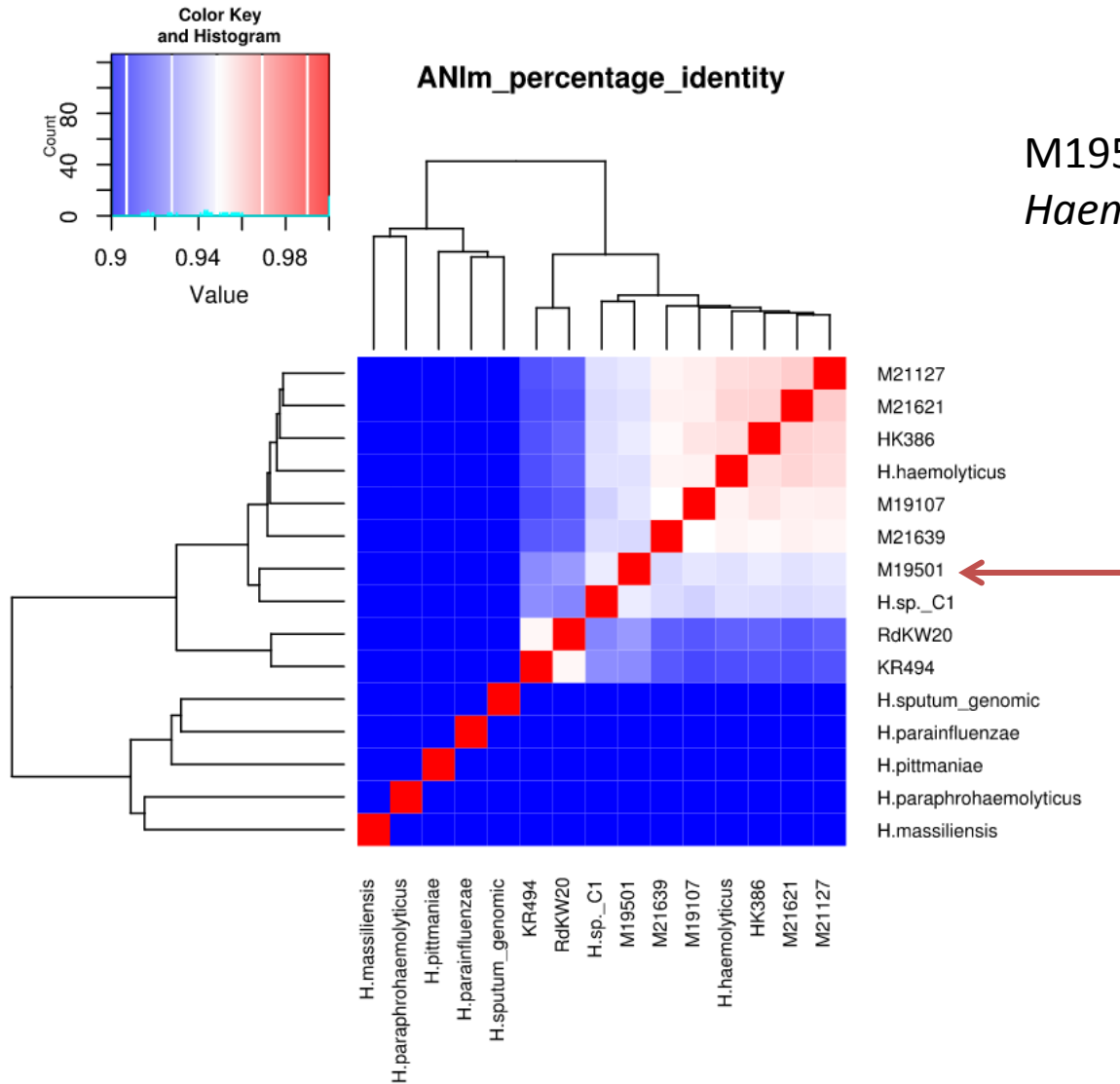
Average Nucleotide Identity



- Below ~95% species cutoff compared to both *H. influenzae* and *H. haemolyticus*

M19501	% ID	Strain	Classification
Min	92.7	KR494	<i>Haemophilus influenzae</i> Serotype F
Max	94.5	M21127	<i>Haemophilus haemolyticus</i>

ANI, all refseq *Haemophilus* species



M19501 is not part of any described *Haemophilus* species by ANI

Biochemical characterization

Apicella Lab, Department of Microbiology,
University of Iowa

- Recently published work on Hi and Hh:

Post, Deborah M. B. et al. "Comparative Analyses Of The Lipooligosaccharides From Nontypeable Haemophilus Influenzae And Haemophilus Haemolyticus Show Differences In Sialic Acid And Phosphorylcholine Modifications". *Infection and Immunity* 84.3 (2016): 765-774.

- M19501
 - Isolated from nasopharynx of healthy individual
 - Iga-protease negative (Other Hhaem are too)
 - Mab-7F3 negative (Unlike other Hhaem)
 - 7F3 was developed in the lab, targets an extracellular “knuckle” on Outer Membrane Protein 6 in Hflu and Hhaem
 - ChoP and sialic acid on LOS similar to Hflu
 - Ultimately classified by the Apicella lab as haemolyticus for purpose of publication